

# How To Update The PM200 Software

---

A step by step walkthrough guide

## 1. Overview

The new PM200 software is distributed as a set of \*.img files. To execute a software update the user has to copy these files to a standard USB memory stick.

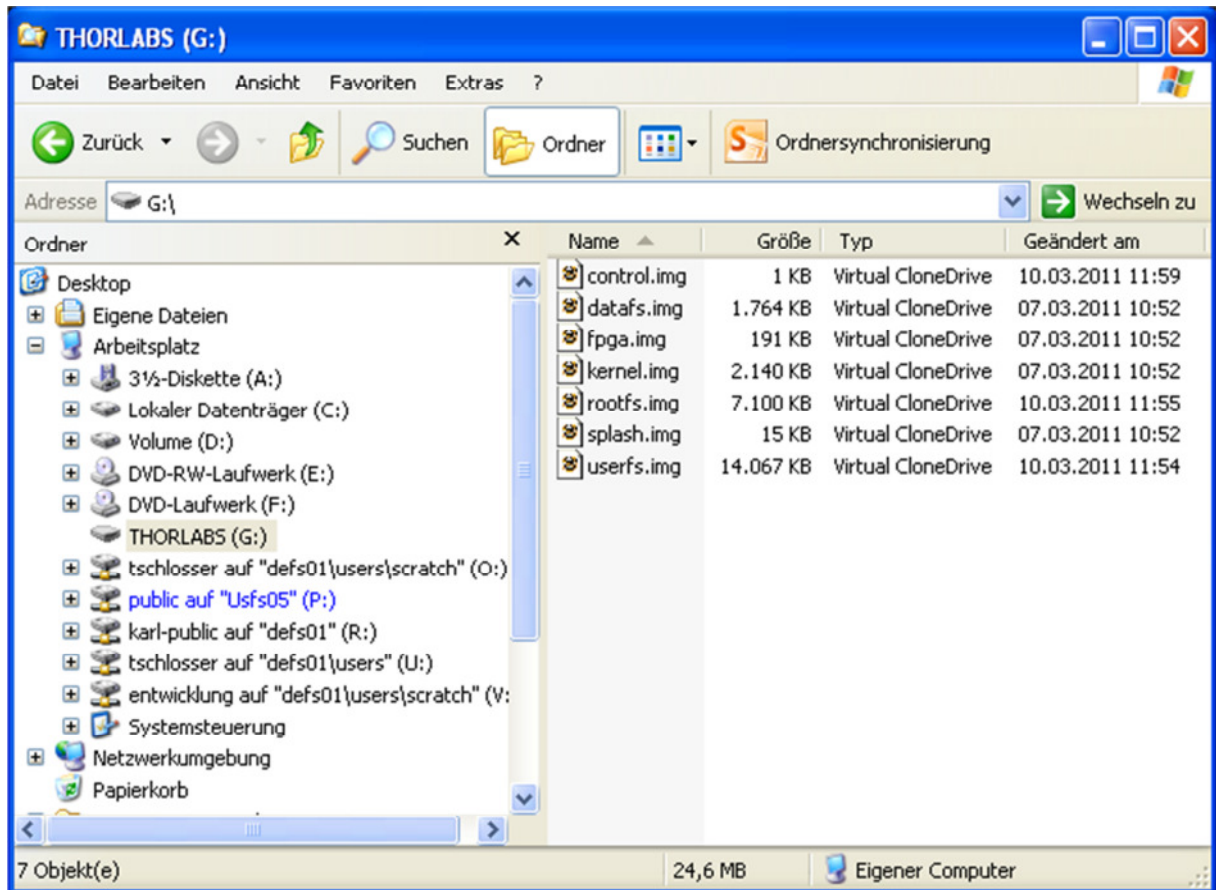
## 2. Requirements

- PM200
- USB-Memory Stick formatted in FAT-16 or FAT-32 with about 100MB free storage space.
- PC (with USB port)

### 3. Preparing the USB Memory Stick

The new PM200 software is distributed as a set of \*.img files. You can find the latest package as a ZIP-File download at [www.thorlabs.com](http://www.thorlabs.com).

Connect the USB memory stick to your PC. Extract the complete set of files from the \*.zip package into the main directory of the USB memory stick:

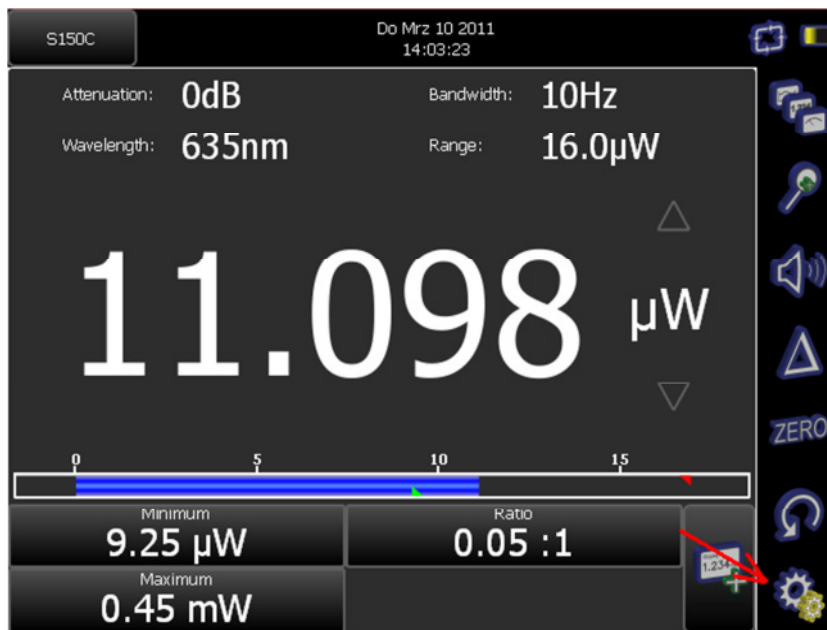


It's not mandatory to use an empty USB-Stick.

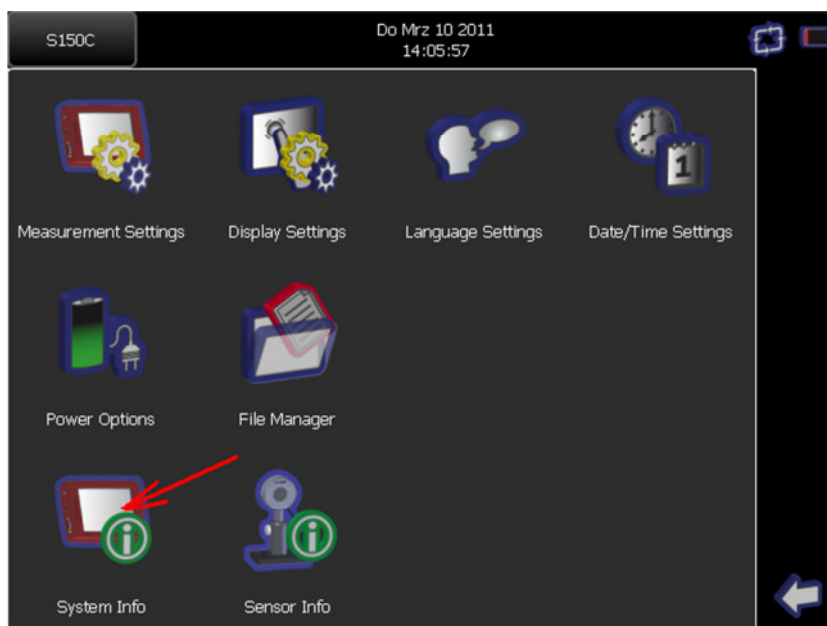
Use 'save removal' to disconnect the USB flash drive, prior to unplugging it from the PC.

## 4. Execute the PM200 Update Procedure

1. Switch on the PM200 and wait until it has booted completely.
2. Connect the USB memory stick, containing the software update, to the PM200.
3. Connect the power supply to the PM200, to avoid interruption of the update process because of empty battery. The update process can take up to 10 minutes.
4. On the PM200 enter the 'Setup Menu' by pressing the gear wheel symbol:



5. Select the 'System Information' page:



6. Press the 'Update Software' button:



7. The screen now will blank for about 3 seconds while the System reboots. Shortly afterwards the startup screen ("THORLABS") shows up until the USB-Stick is recognized and the update starts.

8. Now a text display shows the progress of the update. Don't abort this process. Some steps in the progress can take several minutes without any displayed status feedback.

9. When the update is finished the display text will tell you to reboot the system. Now you can remove the USB-Stick and power down the system by pressing the power button for more than 3 seconds (until the display goes black).

10. When you switch on the PM200 again, it will boot with the new software version.