

Summary of Test Data

Parameter*	Value	Unit
Operating Current	212	mA
Laser chip temperature	23.6	°C
Center Wavelength	794.8	nm
Output Power	30	mW
Linewidth	147	kHz
Side Mode Suppression Ratio (SMSR) at Operating Current	59.1	dB
Slope Efficiency	0.25	W/A
Current Tuning	0.0013	nm/mA
Temperature Tuning	0.060	nm/°C
Polarization Extinction Ratio	>16	dB

* Output fiber: PM780-HP with FC/APC connector. Laser shipped with default operating current at 212mA.

** Current and temperature are adjustable via USB connection.

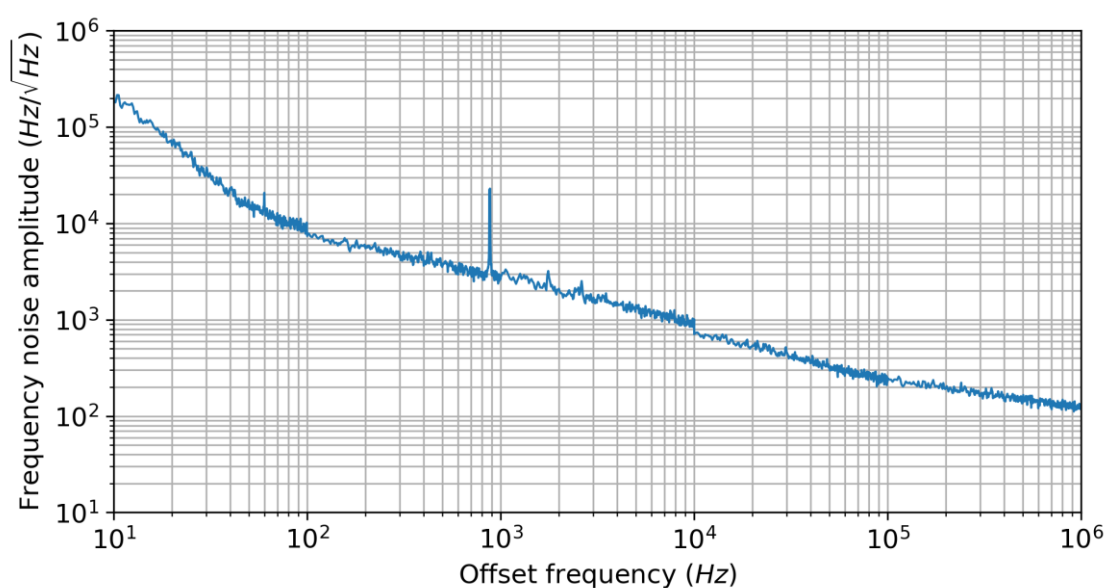


Figure 1 Laser output frequency noise at 212mA pump current. Measured with OE wave 4000 noise analyzer.

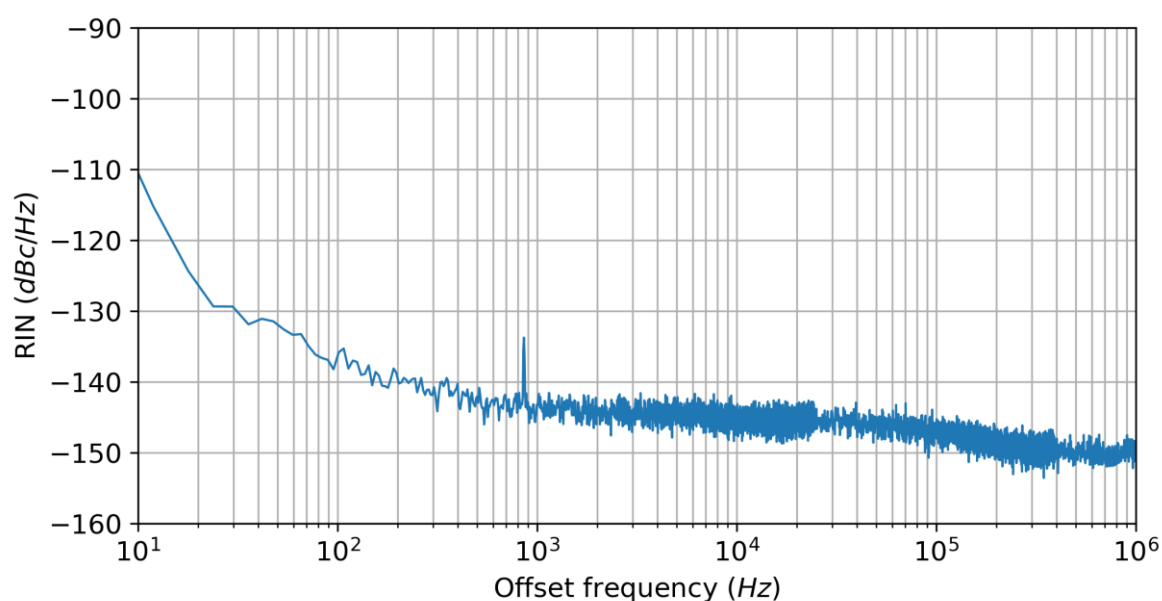


Figure 2 Laser relative intensity noise at 212mA pump current. Measured with PNA1 noise analyzer.

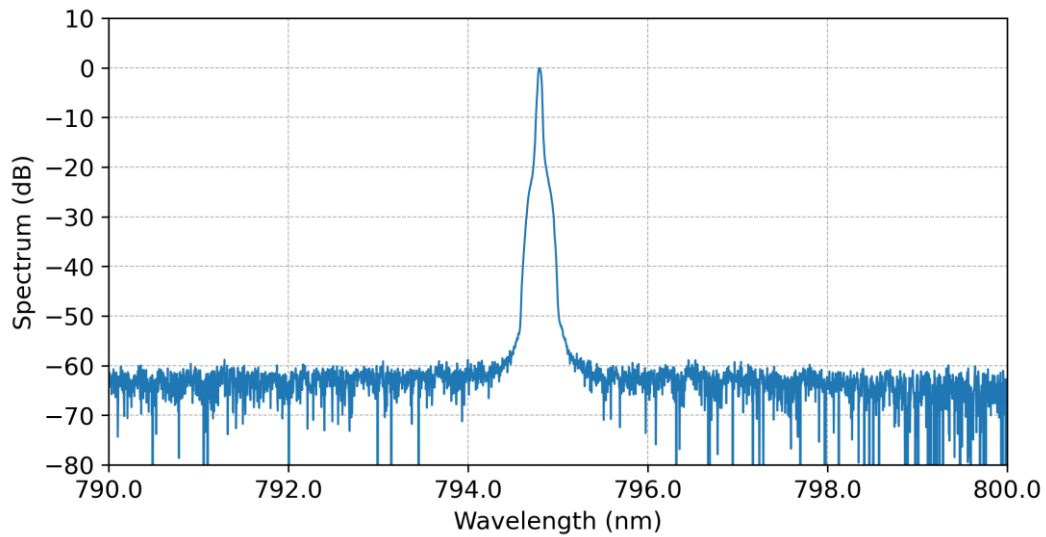


Figure 3 Laser output spectrum at 212mA pump current, measured with Yokogawa AQ6370D OSA

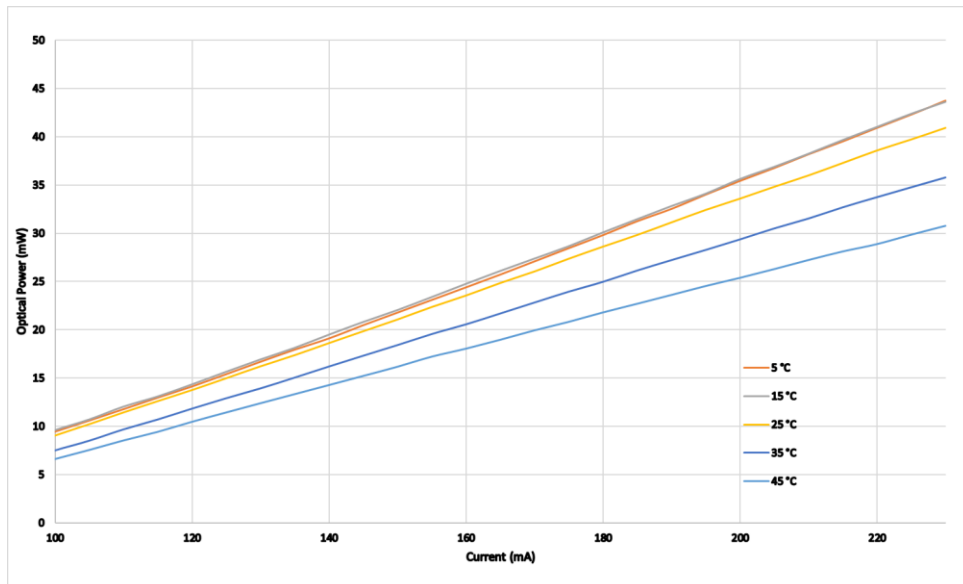


Figure 4. LI Plot for different operating temperatures

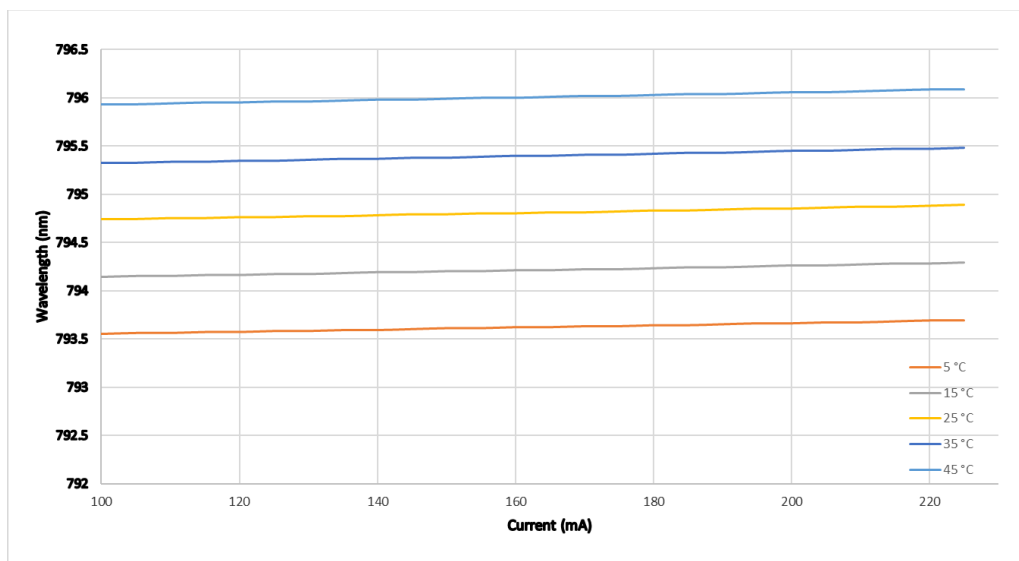


Figure 5. Center wavelength tuning